



Hook Junior School

School Grounds NOW & FUTURE

Report from the Landscape Strategy Workshops –
March 2020 to March 2021



Property Services



Completed April 2021

Introduction

Two workshops were planned to support development of a Landscape Strategy for the school grounds, to guide how they develop, are used, designed and managed in the future.

This report summarises the main findings from the workshops to help the school review the outside learning environment and make positive change for pupils of all ages at the school

The workshops took place on the 12th March 2020 and XXXX tbc 2020. Facilitation of the events were provided by Catherine Eldred, Principal Landscape Architect of the Landscape Strategy Team, at Hampshire County Council.



Contents

This report summarises the main findings from the workshops taking place to help the school review the school environment.

“Where are we NOW ?”

26 people attended Workshop 1 including Mrs Martin, Headteacher of Hook Junior School, Mr Grant the school Business Manager, governors, parents, teaching and support staff, and pupils of all ages.

- Rate the Space ps 3-4
- Key points pg 5
 - Play, Socialising, Breaks and Lunchtimes
 - Outdoor Teaching & Learning
 - Natural Environment
 - Health and Wellbeing
 - Welcome, arrival , access and circulation
 - Community and Context

“Where do we want to be?”

XX attended Workshop 2 and this lead on from Workshop 1. On this occasion the focus was to look to the future of the school grounds and how they could develop over the forthcoming years.

- Vision pg 6
- Future Spaces p 8-9
- Zoning Plans p 10
- Emerging Strategy Plan p 11
- Appendices

Where are we NOW ? (page 1 of 2)

Rate the Space— Participants worked in groups to record their thoughts on a series of 11 cards, as illustrated below. **Feedback** was given to cover the range of cards. All cards were collected. The following pages show the record created, and which will be referred to as part of Workshop 2.



Location 1

Location 1 – This area is known as the area at the back of Year 5. It is used for some learning activities such as science, Golden Time, and also to walk from the classroom to the playground. It feels *"dull, unknown, plain, calm, well looked after, and okay"*. One groups said it feels like a nature area. Quality of the space was rated on average as 6.5/10 as it was considered the area always looks tidy and well maintained. Use of the area scored 3/10 as is only ever used by Year 5 and that is very infrequently.



Location 2

Location 2 is known as the Bike and Scooter Park. It is known as the space that only gets used for this purpose throughout most days and feels *"sad, lonely, functional, and transitional"*. It was also mentioned that *the paths in this area aren't well organised and the area has limited use*. Quality of the area was rated as 5/10 with reasons given including that some of the metal is tired and dated, the benches are broken and unused, and the area *"just looks like nothing"*. Use of the area was rated as 7/10 as it's a space used every day for storage and access. It is a space that although not used at play and breaktimes is walked through by many on their way to the playground.



Location 3 – This space is known as The Old Quiet Area. It is not used for anything apparently and feels *"boring, neglected, dull, bland, shabby, annoying and depressing"*. Quality of the space was rated as 1/10, and this being due to the wooden parts of the area rotting. Use is 0/10... It is an area that is never used, and is considered off limits.



Location 3

Location 4 is the Main Playground. Quality of the area was rated as 6.5/10 as *"it looks designed for what it is designed for, it's well looked after but I do slip on it sometimes, it looks like a dull area, and with no shelter"*. It is an area used for running around, sports and games, and general playing. It is described as feeling *"crowded, fun, and hectic but safe"* during break and lunchtimes, but *"dull, bare, empty and spacious when not in use!"*



Location 4

Location 5 had a wide variety of names including the Quiet Zone, the benches, and The Shelter. It was mainly thought of as an area to go to when you wanted to sit and talk with friends, however some did also think of it as a space in which to play hide and seek, or climb in. It was described as feeling *"old, muddy, used, rotten, and crowded"*, and due to much of that was rated as only 5/10 for quality. Use of the area was rated higher at 7/10 though as it is a space that is well used at break and lunchtimes throughout the year. It was said though that the structure does not give any shelter from the sun in the summer though which is always a concern.



Location 5

Location 6 was described as being the "Unused Place". It is never used for anything and because of that is described as feeling *"boring, unloved, restricted, empty, and use-less"*. It scored 1/10 for quality, and 0/10 for use as *"it feels like a real waste of space as no-one in the school can use it!"*



Location 6

Where are we NOW? (page 2 of 2)

Location 7 is known as The Playdale. It is a large wooden structure for playing on, and includes climbing, and for a variety of active play. Some at the workshop though of it as a fun space, but others considered it small and boring and not used very much. Quality of the space and structure were described as "old, a bit tired and small", and scored 5/10. Use of the area was rated only at 3/10 and this was down to a variety of reasons including the fact that often there is not enough lunchtime supervisors to allow the area to be open, and in the summer months when everyone is on the field it is unable to be used for similar reasons. It is also not so popular due to the newer Trim Trail equipment being more challenging.



Location 7

Location 9 is the Field. It is used for a wide variety of sport including PE, Sports day, Cross Country, and in the summer months for free play at lunchtimes. It is well loved area of the school and was described as feeling "open, free, empty, spacious, green, safe, and big". Its quality is rated highly in the summer, but in the winter sadly wet weather often renders the area too boggy to be used, and so was rated 5/10 accordingly. Use therefore scored the same.

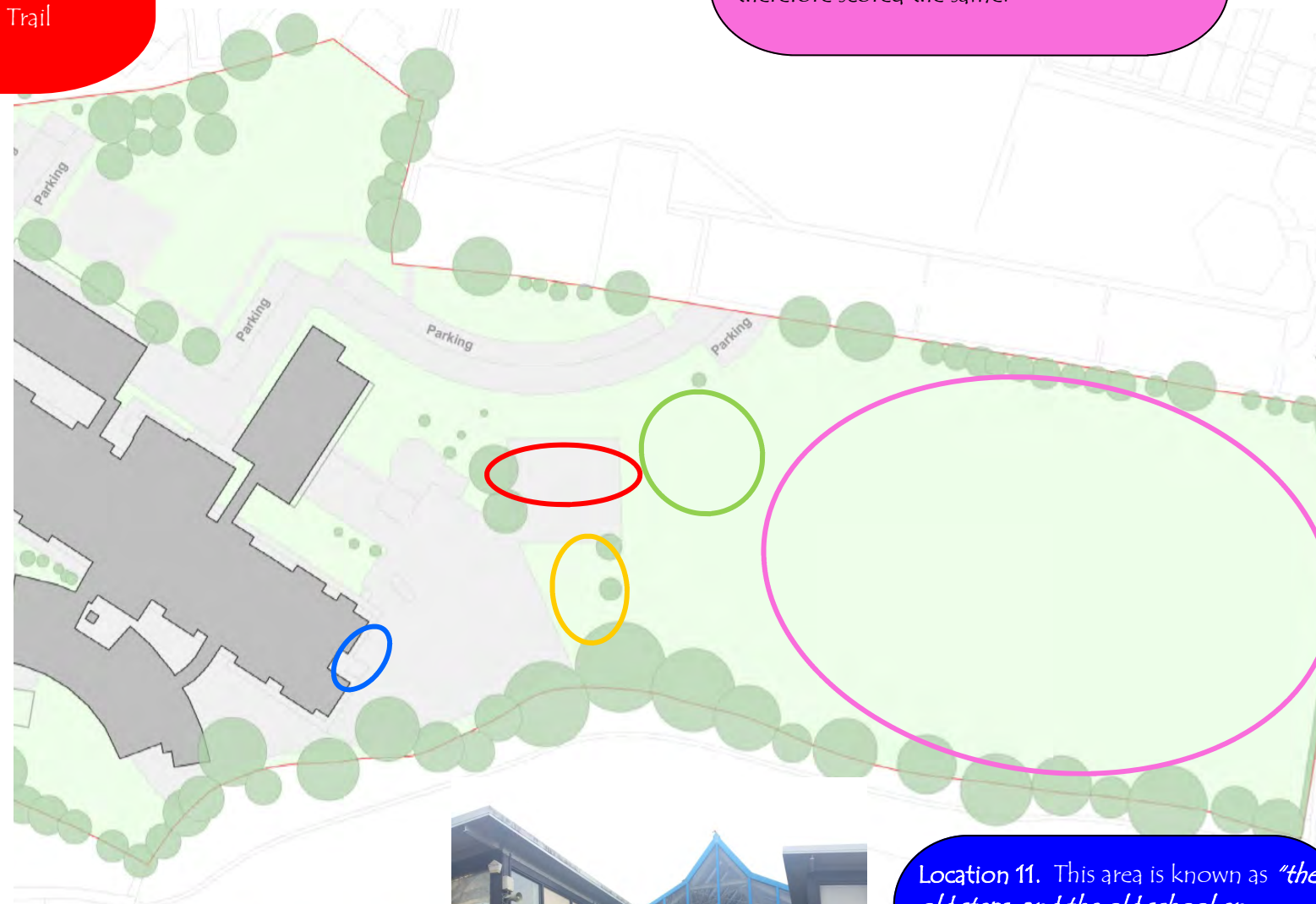


Location 9

Location 8 is called the Reading Area, or Story telling Area. It is used for reading either independently, or to each other. Some enjoy it as an area in which just to sit in the summer months. It is a space that feels "relaxing, lonely, old, peaceful and safe". Some other children did also say that it was also used for games, but can feel a little bit out of the way and unused. Due to it being a seasonally restricted space Use of the area only scored 4/10. Quality scored 5/10.



Location 8



Location 10

Location 10 is known as The Trim Trail. It is used for climbing, having fun and used mainly at break and lunchtimes. The main comment about the equipment is that it felt good because it was new, and felt fun as somewhere to be active. It is used on a rota basis, and so because of that some were keen that there is something else or more to compliment this. Ratings for quality were an average of 8/10 due to how new it is, and Use also scored 8/10 because it is hugely popular and used as much as it possibly can.

Location 11. This area is known as "the old steps, and the old school entrance". It's one of the access points to get into school. The descriptions of how the area feels ranged from "big and bold", to "drab, boring and dirty". It scored relatively low for quality 5/10, as is seen by everyone as a purely functional space. Use scored 6.5/10 as some classes use it a lot to get in and out of school.



Location 11



Where are we NOW ?

Key points Participants worked together in groups to discuss how the grounds are currently used. Key points from the topics discussed are shown below.....

Access, Circulation, Arrival and Welcome

- It was mentioned by parents at the workshop that although the frontage of the schools is bright, modern and welcoming the gates at drop off and pick up times do cause problems with congestion. They are too narrow for the amount of people trying to get through them at these very busy times and so many feel like they are waiting unnecessarily.
- There are a number of gates on to the site so parents have a variety of choice, but all are equally as narrow and congested.
- It was also mentioned that signage to guide people to the school could be improved as it is not clear to visitors and newcomers, and also there is a lack of clarity in knowing which is the Junior school and which is the Infants.

Play, Breaktimes and Socialising

- It was thought by many at the workshop that across the grounds there are a wide variety of play and socialising activities for the pupils to get involved in.
- Physical play activities take priority with the Playdale, the Trim Trail and the field area that can be used and enjoyed for running around on.
- Quieter spaces for pupils to enjoy other activities are more limited and perhaps in areas that are classed as "out of bounds" for large times during the year.

Health and Well Being

- "We know we are very lucky to have all the space that we have. Plus, we have lots of nature and freedom of movement!"
- There is a lot in the grounds to support physical health and well-being. There is a wide variety of sport that happens across the site, but it is understood by many that this changes seasonally.
- Shade is a concern, as in the summer there aren't many areas that have enough shade for all the pupils both on the equipment, the playground and the field. All of the main areas of shade are around the edges of the site and difficult to supervise.

Outdoor Learning

- Outdoor learning happens sporadically throughout the year but is weather dependant. Much of the learning that does happen outside is PE based, but other lessons including Maths, Science, Art and English do also take place at times.
- Storytelling does also sometimes take place outside, but not often.
- It was thought by everyone that this could and probably should happen more as the grounds are vast and have huge potential to support learning.

The Natural Environment

- The grounds of the school are not seen as currently offering a huge amount in terms of flora and fauna, and it was mentioned that apart from the large open field it does feel like the school is lacking in greenery.
- The trees around the outer edge provide shade and shelter but often the pupils are not allowed in these areas due to the levels of supervision that don't allow all of the grounds to be used all of the time.

Context and Community

- The grounds are often used throughout the year for fundraising activities arranged and run by the HSPA (Hook Schools Parents Association). These include the Summer Fair, Fireworks celebrations and also for events for the schools to enjoy together such as the Circus.



Where do we want to be?....

"Our Vision" – Participants worked individually to complete the sentence.....

"We would like our school grounds to be a place where....."



- Environment enriches social, emotional, and physical well-being for all site users. Symbiotic with nature.
- We'd like our school grounds to be eco-friendly.
- We'd like an environment that supports the social, emotional and physical well-being of the STAFF too!
- Where everyone can be excited and engaged by the different things they can see, do, touch, hear and experience.
- Being eco-friendly.
- We can feel calm and physical.
- Listen and watch nature.
- We can relax in a calm and friendly space and learn.
- A place that is calm, but where you can still run around, and also for it to be eco friendly.
- Where parents have specific places to stand for different Year group pick ups.
- Where you can see lots of your friends, and can run around with them!
- Where you can make lots of friends.
- Where there is somewhere for me to practice music.
- Kids feel happy and safe.
- Where you can greet parents with a smile on your face.
- A place we can support and celebrate.
- A place you can feel engulfed by learning.
- A place all space is used for fun and learning.
- Where we are all having so much fun, and can enjoy our school!
- Learn lots to teach to other people, but still be having fun!
- Birds, bees and animals and children flourish – More wildlife such as orchard, pond and hawthorn. More animals. More outdoor learning.
- Every living thing is welcomed and has a great time.
- We are safe
- Attracts wildlife (bugs and butterflies) and stimulates children's imagination.
- It is quiet and nobody can be bothered.
- Year round outdoor learning – and a Forest School area.
- Where we can have access to shade.
- You can have lots of fun, and really enjoy it here.
- Pupils can relax, learn and have fun.
- Where we can chat privately with friends and teachers, and to be safe.
- We could add something to play with on the field.
- Where we can use the field all year round.
- Lots more plants!
- Where we can be in a place that is calm and relaxing.
- Where we can socialise together, learn, relax and appreciate our natural environment.
- To be in a place where we are not cramped.
- Where you have a welcoming environment.
- People can not get hurt, and have fun.
- You can have a certain place where you can be alone.
- Where we have less restrictions on the playground.
- Where you can read quietly.



Where do we want to be?...

Future spaces

46 staff and pupils from across the school selected images to describe the kind of spaces they would like to see in the future school grounds. They discussed these together and then presented their thoughts on positive and negative aspects of the selected images. The choice of images chosen and discussion is summarised here.



Amphitheatre Seating—Space to sit down in the summer, outdoor learning enhance current classroom and hall facilities, story area, sharing work and performing etc. Everyone will have access. Good place to sit and talk with friends.



Mud Hut style structure
Relax, stories, place to chat without others running around, chill out, shade



Hollow Tree Trunks / Sculpture—Play, hide, adventurous, creative and environmentally friendly.

Outside shelves with books etc. Places to relax, chat and read



Shelter with benches underneath
Relax and can eat outside, all weather, useful for small group work, chill out area to read/colour, etc.



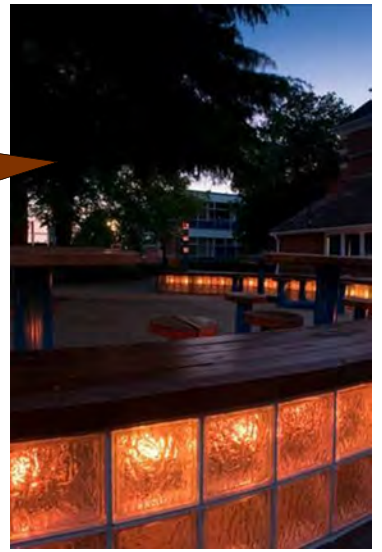
Log Cabin Building
Used for clubs eg—gardening, music, and ceramics. Shelter and warmth.

Play Court surrounded by fence, and a possible all weather surface.
All year round, could be let out to bring in finance, support community groups, bring more space on non-field area for PE lessons and play, keep children's minds and bodies active, increase activity = increase academic attainment.



Willow Tunnel—Space to go and be calm and relaxed

Lighting around the tree—Able to sit and relax



Woodland tree area with benches—Can do activities in that sort of area, and relaxing.



Outdoor Gym—Incorporate exercise, fun.... Keeps you fit!



Where do we want to be?...



Sand play area
Fun to play with friends.



A tunnel to grow vegetables—The joy of producing own food and understanding how nature works.

Shelters made of wood and sticks.—Activity to do in the grounds. Places to sit with friends.



Fire building
Fun to build campfires and toast marshmallows, teach about fire safety.



Seating around the tree
Space to sit down and chill out, talk with friends.



Woodland seating—logs and benches
Natural woodland area to provide shade, calming environment away from bustle of playground, allows children on own to follow others on a course – imaginative / creative play. Being active without realising.

Playground equipment—slide, climbing etc.
FUN!!! We would love it!



KEY SPACES
Participants listed the common themes around which spaces and activities were most required within the school grounds for the future.....



Hook Junior School — Emerging Strategy Plan

DRAFT — April 2021

Describing our ambition for the grounds

Area 1: All Weather Trail

Ambition: To provide an access route around the school field area that enables year round use of the grounds for a variety of play and learning opportunities.

Ideas and Requirements:

- Discuss further appropriate surface treatment for differing areas of the route, and share thinking with HCC Property Services Management Surveyor to discuss further if additional approvals might be needed.
- Additional areas of changeable activity throughout the grounds will be supported by this trail, and can have seasonal changes made available too eg—spotter cards for nature, art and colour, exercise etc. Pupils can access independently and enjoy a different activity along the journey of the trail.

- ★ • Include areas of willow tunnel as shown to add to the excitement.

Area 2a and 2b: Environmental Woodland Learning Spaces

Ambition: To create a curriculum based space to support all aspects of the Key Stage 2 curriculum.

Ideas and Requirements

- Area to be a teacher led space to be used in curriculum teaching time and to enhance and encourage outdoor learning across all parts of the curriculum in all year groups.
- Encourage all learning to be enhanced by closer contact with the natural world in this space, and for the health and well-being of teaching staff and pupils to also be improved by using this area to teach within.
- Discuss further with all teaching and support staff what the area needs to enhance it further and help create a desirable space to teach within. Ideas to include, a firepit, Bug Hotel, mini beast spaces, seating permanent and/or flexible, storage, shade/shelter,

Area 3: Nurture Space

Ambition: To create and provide a self contained nurturing space for staff and pupils to use for calming and quiet time outside of the classroom, or away from the playground. Area to promote tranquil and calm time for all who need it throughout the day, and in all weathers.

Ideas and Requirements:

- Area to include all aspects of sensory relaxation including sounds, smells, taste, texture and colour. Planting to be named with QR codes for children to explore and find out more, and resources made available for reading, drawing, colouring and painting to take place in the space
- Area to also include a polytunnel to enable pupils to enjoy the nurturing activity of planting and growing all year round, and in all weathers.

Area 4: Seating throughout the grounds

Ambition— To create calm spaces to enhance health and well-being where pupils and/or staff can sit and have some time away from screens and activity. Places to talk, or enjoy the quiet.

Area 4a—Banked natural seating using the existing landform including shade.

Area 4b—Current chamomile lawn to be replaced with artificial turf with bench seating. Area for table tennis to also be enjoyed.

Area 4c—Use existing landform to create amphitheatre style seating for storytelling and class performances.

Ideas and Requirements

- Each individual area to be discussed further with HCC Landscape Team for advice on contractor support for landform re-design.

KEY PRINCIPLES

- Explore the use of natural and sustainable materials throughout the development of the school grounds.
- To make links with local sporting facilities close to the school to support both their use and maintenance, and to promote the use of them by the whole community.
- Support recycling further by including appropriate bins for collection, plus litter picking activities with pupils in and around school.

Area 5: Nurture Space

Ambition: To provide a space for individual teaching or nurture activities to take place outside in the fresh air, and with all resources needed to make this a positive place to be. Area to also be an alternative space for lunchtime reading/colouring for those who would prefer something different from the physical play on the playground areas.

Ideas and Requirements

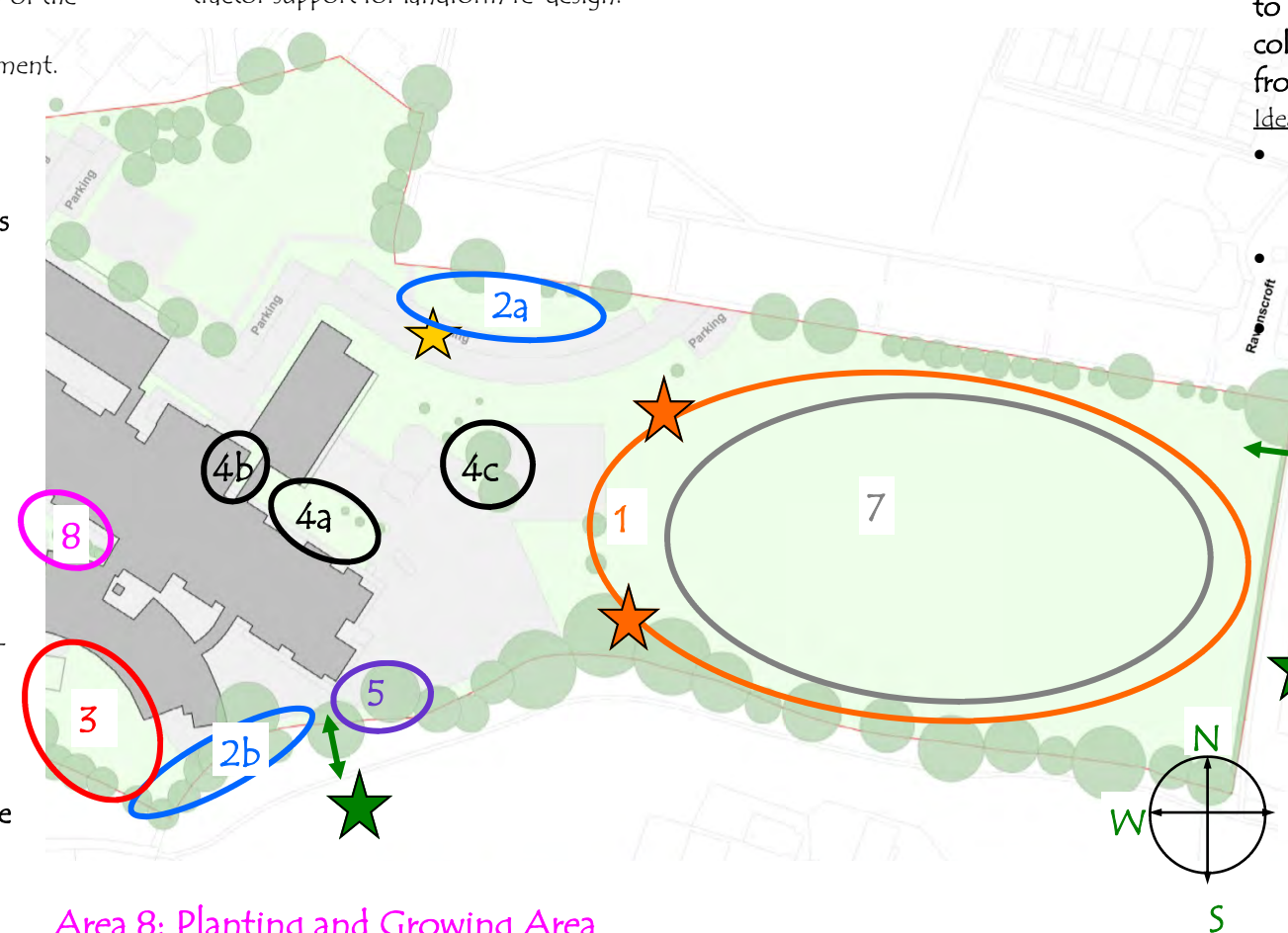
- Discuss the area further with all teaching staff to enable the space to become well-loved, and understood that it can be used both for dedicated lessons or spontaneously.
- Explore the options available for natural shade to be created over the space to provide shade and shelter all year round. Include all weather resilient book storage for the outdoor library that pupils can use at break and lunchtimes.

★ Area 6: Fenced Sports Area

Ambition: To enable the pupils at the school to have a dedicated hard surfaced sports area for ball sports, both for lesson time but also for matches against other nearby schools.

Ideas and Requirements

- ★ • Existing facilities area available adjacent to the school grounds and SLT will contact the Parish Council to see if use of these existing community spaces may be possible.
- Additional gates to be included, as shown to enable safe access immediately from school to these pitch areas.



Area 8: Planting and Growing Area

Ambition: To provide a well resourced area that supports the DT curriculum for all pupils throughout the school, Area to also enable those pupils who would like to do more growing through a Gardening Club a place to gather and enjoy the activity.

Ideas and Requirements

- Discuss area further with all teaching staff to decide what resources are needed for the area to support curriculum learning, and

Area 7: Field Area

Ambition: Retention of existing large open field area for free play, sports and to hold large school events.

Ideas and Requirements

- Continue to manage and maintain the existing open grass field area to ensure all games and activity can take place throughout the year.